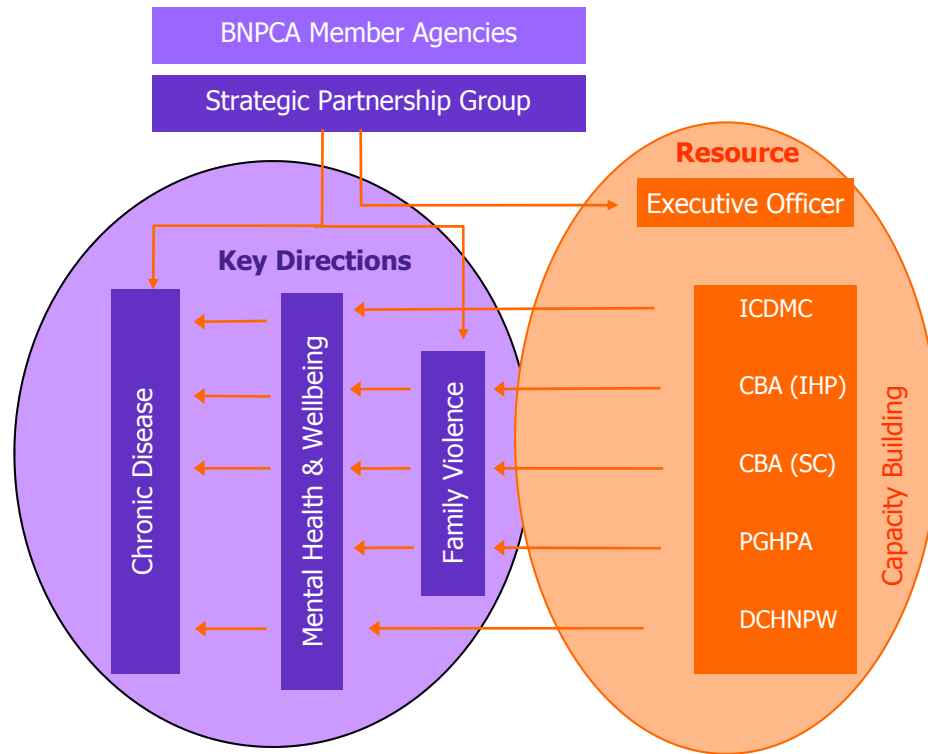


Strategic Plan 2009 – 2010

**A healthy and well community;
supported by a service system that is comprehensive and accessible**

Values

- Equity**
- Trust**
- Respect**
- Integrity**
- Fairness**



Capacity Building

- Partnership
- Organisational Development
- Leadership
- Resources
- Workforce Development

ICDMC - Integrated Chronic Disease Management Consultant
 CBA (IHP) - Capacity Building Advisor (IHP)
 CBA (SC) - Capacity Building Advisor (SC)
 PGHPA - Problem Gambling Health Promotion Advisor
 DCHNPW— Disability Complex Health Needs Project Worker

Goals

Objectives

Mental Health
The mental health and well being of people in the community is improved

- BNPCA will build partnerships that address the factors that contribute to increased levels of anxiety and depression
- BNPCA partner agencies will support partnerships that promote best practice Mental Health outcomes in community settings
- BNPCA partner agencies will work to improve access to mental health services for vulnerable members of our community
- BNPCA partner agencies will work together to address the co-morbidity between problem gambling and mental health
- BNPCA partner agencies to include people with a developmental disability in mental health & wellbeing health promotion activities and service provision

Integrated Chronic Disease Management
People at risk of chronic disease are assisted to avoid or delay the onset, and people with chronic disease are assisted to maximise their health and wellbeing and reduce admission to hospital

- BNPCA partner agencies will work to improve the integration and planning of chronic disease services in the catchment
- BNPCA partner agencies will support the increased use of self management practices across the catchment
- BNPCA partner agencies will support developing a more systematic, consistent care for people with chronic conditions
- BNPCA partner agencies will support health promotion interventions that seek to avoid or delay the onset of chronic disease in our community
- BNPCA partner agencies will be supported to consider service access issues and to implement priority access to people with a developmental disability

Family Violence
The incidence of family violence will be reduced and the needs of people who have experienced family violence will be appropriately addressed by member agencies

- BNPCA will develop an understanding of existing Family Violence Networks, including consulting "lead" agencies such as WHIN & Berry St.
- BNPCA partner agencies will participate in health promotion activities aimed at addressing family violence risk factors
- BNPCA partner agencies will work to increase the number of agencies that identify family violence as an issue in our community
- BNPCA partner agencies will work to improve access to family violence services for members of our community
- BNPCA partner agencies will work together to address the co-morbidity between problem gambling and family violence